

FIRE + RESCUE

WHEN THINGS HEAT UP,
COUNT ON WORTHINGTON

When firefighters and first responders put their lives on the line, the margin for error is zero. They need to know their equipment will not fail. That's why rescue workers in 40 countries on six continents choose Worthington for SCBA tanks that are safe, tough, and have the best weight / volume ratio on the market.

Our cylinders for fire-suppression systems are just as dependable. Whether you are charged with protecting people, facilities, or data, Worthington can help keep them safe.



CALM IN THE FACE OF DANGER

Walking into hazard-rich environments is all part of a day's work for firefighters. Worthington designs its **META1** SCBA cylinders so that running out of air is not one of those hazards.



A WORLD OF RISKS...

EXTENDED IMMERSION IN
UNBREATHABLE ENVIRONMENTS

STRENUOUS PHYSICAL EXERTION

DIRECT CONTACT WITH FLAMES

HEAT CONDITIONS STRAINING
SCBA MAXIMUM PRESSURE

REPEATED EXPOSURE TO
EXTREME CONDITIONS

BLUNT FORCE IMPACT DUE TO
LOSS OF STRUCTURAL INTEGRITY

HEAT-INDUCED DISCHARGING
OF STORED AMMUNITION

EXTENDED DEPLOYMENTS IN
HEAT OF 65°C AND ABOVE

HEAT FLARES REACHING 100°+ C

NEED TO REPLACE VALVES
BEFORE SCBA TANKS

... THE NEEDED PROTECTION

45 MINUTES OF AIR UNDER
MODERATE EXERTION

LIGHTEST STEEL SCBA
CYLINDERS ON THE MARKET

ABILITY TO WITHSTAND > TWO MINUTES
OF DIRECT CONTACT WITH FLAMES

BURST PRESSURE ABOVE 720 BAR

"NON LIMITED LIFE" WITH
DECADES-LONG TRACK RECORD

INDESTRUCTABLE ON
STANDARD DEPLOYMENTS

RUPTURE-PROOF EVEN WHEN
STRUCK BY AMMUNITION

SETTLED PRESSURE 378 BAR
AT THROUGH HEATING OF 65°C

RISK OF RUPTURE AT > 300° C

M18X1.5 THREADING COMPATIBLE
WITH EXCESS FLOW VALVES

STRESS TESTED AND PROVEN

Our **META1** SCBA products are light, tough, and impermeable. This means firefighters can keep their cylinders full and ready for use at all times.



META1

SCBA

TYPE 1 STEEL CYLINDERS

META1 SCBA steel cylinders offer impermeability: When deployed they are as charged as when they were filled.

META1

SCBA

TYPE 1 STEEL CYLINDERS

How should you go about choosing your SCBA provider? Wouldn't it be great if you could find a company that gives you everything you want: the highest safety standards, superior paint finish, required certifications, the lightest-weight steel SCBA steel cylinders, fast delivery, and superior customer support? Look no further: We're **that** company.





At 6.9 KG, the 6 L 300 BAR model is the lightest
METAL Type1 SCBA cylinder on the market!

METAL

SCBA

TYPE 1 STEEL CYLINDERS

For more than two centuries, engineers and workers at our Kienberg, Austria, site have been shaping steel – beginning with carriage axles, then turning to pressure vessels at the start of the 20th century.

This means over a century of experience and expertise stands behind the lightest **METAL** SCBA Type 1 steel cylinders on the market. Choose what's best for you from the **METAL** SCBA range!

Water Capacity (L)	Gas Type	Working Pressure (BAR)	Diameter [MM]	Length (MM)	Weight [KG]	Base Shape	Neck Ring
1	High Pressure*	200	83	260	1.5	convex	without
2	High Pressure*	200	100	345	2.3	convex	without
3	High Pressure*	200	115	395	3.4	convex	without
6	High Pressure*	200	140	515	5.4	convex	without
6	High Pressure*	300	140	510	6.9	convex	without
6.8	High Pressure*	300	140	580	8.2	convex	without
7	High Pressure*	300	140	595	8.4	convex	without

FACE THE HEAT LIGHT ON YOUR FEET

Firefighters and first responders face many challenges: heat, toxic atmospheres, falling objects, and many more. Comet SCBA cylinders offer a tool for mastering them.



A WORLD OF RISKS...

LONG DEPLOYMENTS IN HIGH HEAT

TOXIC ATMOSPHERES

HEATED ENVIRONMENTS STRAINING
SCBA WORKING PRESSURE

PHYSICAL EXERTION IN HEAVY GEAR

HEAT FLARES EXCEEDING 100°C

RISK OF DAMAGE TO PERSON AND
EQUIPMENT

... THE NEEDED PROTECTION

LIGHTEST POSSIBLE TANK
HOLDS 45 MINUTES OF AIR

CLEAN ALUMINUM LINER GUARANTEES
PUREST OXYGEN MIX

BURST PRESSURE OVER 900 BAR

6.8L SCBA TANK WEIGHS
LESS THAN 5 KG

WITHSTANDS CONTACT WITH FLAMES
REACHING 1000° C ACCORDING EN137

EXCESS FLOW VALVE (EFV) AND SINTER
FILTER, PROVIDE EXTRA PROTECTION

COMET

SCBA

TYPE 3 COMPOSITE
METALLIC CYLINDERS



SAFE. LIGHT. STRONG.

Our Comet® SCBA cylinders give first responders the agility they need to move confidently through dangerous environments. This lets them stay focused on the job and return home safely.

COMET

SCBA

TYPE 3 COMPOSITE METALLIC CYLINDERS

Fire + rescue workers can be even lighter on their feet with our Comet® SCBA range – over 40 percent lighter than its steel counterpart.



Innovation



Compact



Durable



Lightweight



Design

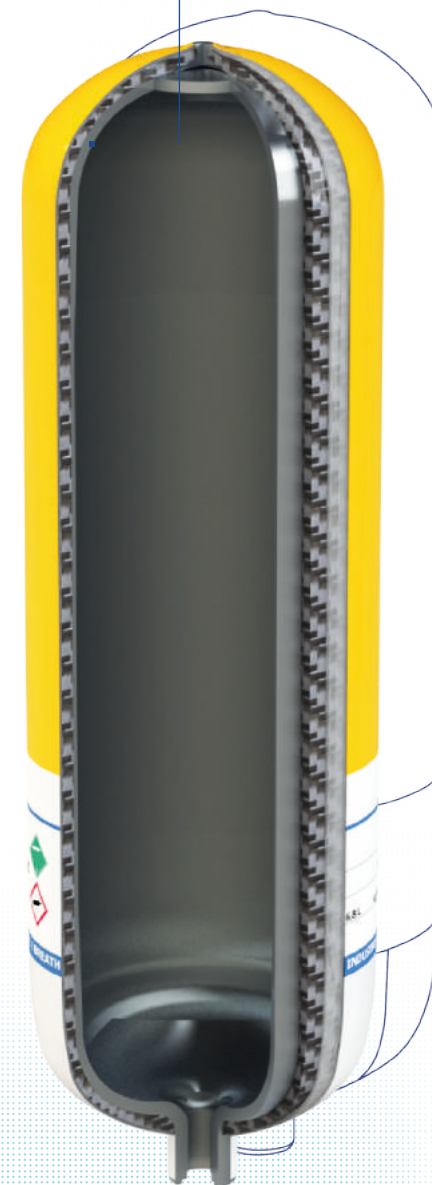


Safe



Quality

Model	15 Years	30 Years	Non-limited life (NLL)
Bar	300	300	300
Volume [L]	6,8	6.8	6.8
Diameter [MM]	160	161	161
Length [MM]	520	536	544
Weight [KG]	4.0	4.7	4.9
Service Life	15 Years	30 Years	NLL
Port	M18x1.5 according to EN144-1	M18x1.5 according to EN144-1	M18x1.5 according to EN144-1





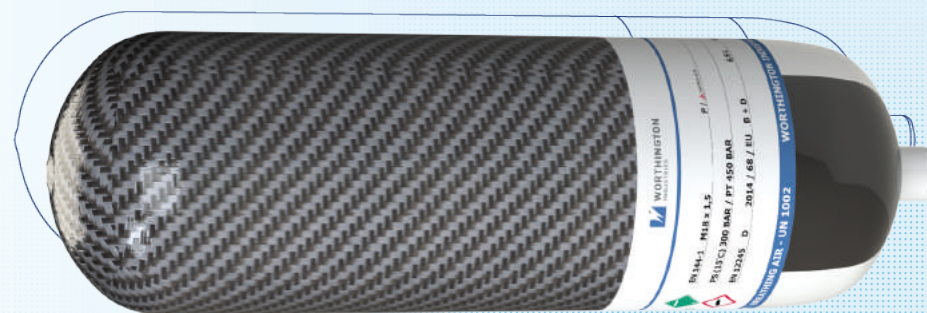
COMET

SCBA

TYPE 3 COMPOSITE METALLIC CYLINDERS

WORLD CLASS DESIGN AND PRODUCTION

Based on European and international design standards, Comet® lightweight composite SCBA Cylinders enable first responders to work safely and stay light on their feet in hazard-rich environments. The Comet® SCBA line features 15-year, 30-year, and non-limited-life (NLL, after 5 year requalification period) models and complies with all regulatory standards and SCBA OEM requirements. Manufacturing and testing in Worthington's Portugal facility is automated and computer guided. Real-time data collection accompanies the production process – allowing full traceability of materials and components. You can customize Comet® SCBA tanks so that first responder units can have personalized equipment.



WORTHINGTON AUSTRIA

For more than two centuries, workers at the Kienberg site have been shaping metal for the “automotive industry” – from axles for carriages to on-board tank systems for alternative fuel vehicles. Today, employees process 27,000 tons of steel annually, or the equivalent of 2.5 Eiffel Towers.

The composite facility serves customers at various positions in the alternative fuels ecosystem. The H2 and CNG cylinders and cylinder systems engineered and manufactured here will help companies meet their sustainability objectives.



WORTHINGTON PORTUGAL

Engineers and production workers have defined innovation in cylinder design and manufacturing for six decades at Amtrol-Alfa, our facility in Portugal.

In the early 2000s, the company established a composite competence center and brought the award-winning composite Comet® cylinder to market in 2005.

In 2022 the Comet® SCBA Type 3 cylinder joins this timeline of innovation excellence. Comet® SCBA offers the highest standards in safety and reliability, compliance with regulatory and SCBA OEM requirements, and customizable color and label options for brand differentiation.



Worthington Industries

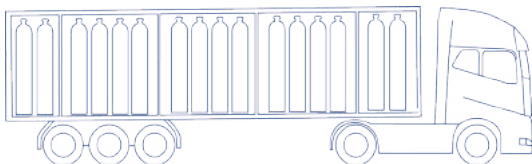
Worthington Industries' European facilities comprise the largest pressure-vessel design and manufacturing network in Europe. Over 1,300 employees work at facilities in Austria, Poland, Portugal, and Germany. With the lightest composite and steel low- and high-pressure cylinders available, Worthington Europe designs and makes solutions for fire rescue + suppression, alternative fuels, industrial gases, and technical gases.

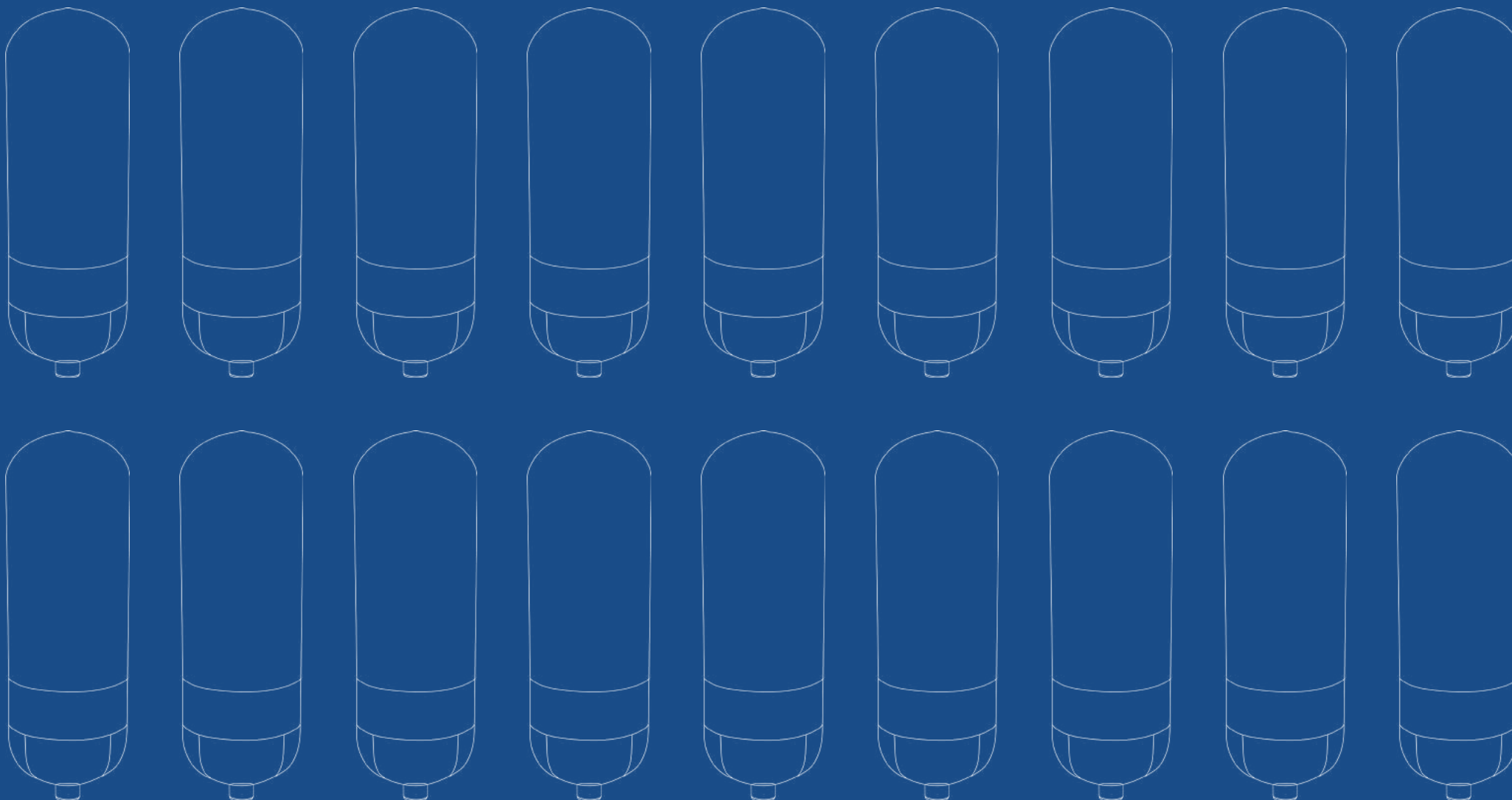
For META1 SCBA Type 1 cylinders, contact Worthington Austria:

worthingtonindustries.eu
at-worthington@worthingtonindustries.com
+43 7485 606-0
Beim Flaschenwerk 1
3291 Kienberg bei Gaming
Austria

For Type 3 Comet® SCBA cylinders, contact Worthington Portugal:

amtrol-alfa.com
sales@amtrol-alfa.com
+351 253 540 200
Estrada Nacional 206, KM38
4805-026 Brito, Guimarães
Portugal





LEARN MORE:

www.worthingtonindustries.eu

at-worthington@worthingtonindustries.com

+43 7485 606-0



MAKERS OF BETTER