



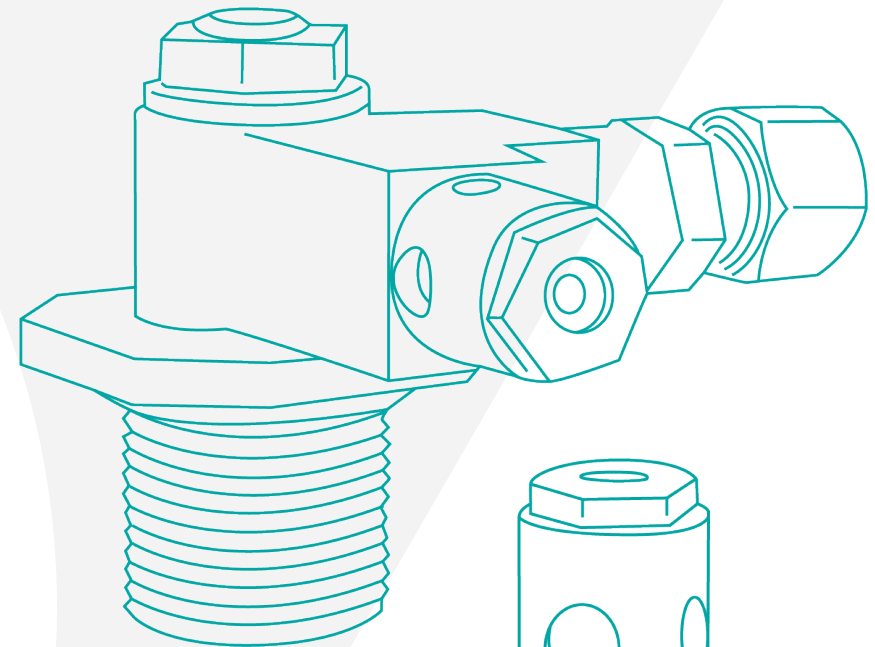
**WORTHINGTON**  
ENTERPRISES



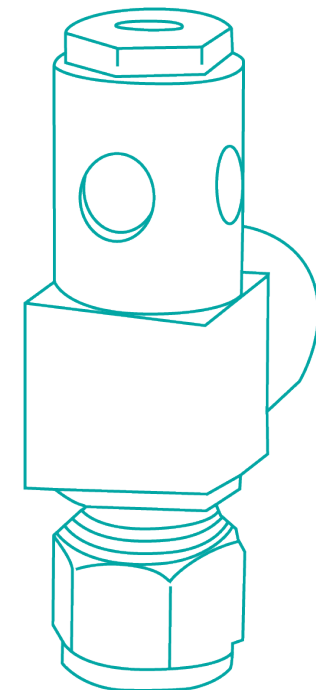
# PTEC TPRD MIDDLE + END PLUG

**If outside factors push your H2 containment system toward critical temperatures, our PTEC TPRD (Thermal Pressure Relief Device) “breaks” the heat wave. We have engineered the device’s glass ampoule to burst when it’s time to safely vent the pressure.**

Hydrogen-fueled mobility is evolving fast. Whether you need to catch up, keep pace, or get ahead, we can help. We lead the market with compressed H2 containment solutions for storage, transport, and on-board fueling systems. From hydrogen refueling stations to storage and transport containers, from cars to buses and trucks, our type 1-4 cylinders, cylinder systems, and gas-street components help your sustainable mobility program move full speed ahead.



End Plug



Middle Plug

# Engineered in Germany

Manage your hydrogen-fueled operations with peace of mind using **PTEC TPRDs**. Like all our components, **PTEC TPRDs** are engineered to the highest levels of safety, cleanliness, and user experience.



Durable



Lightweight



Design



Innovation



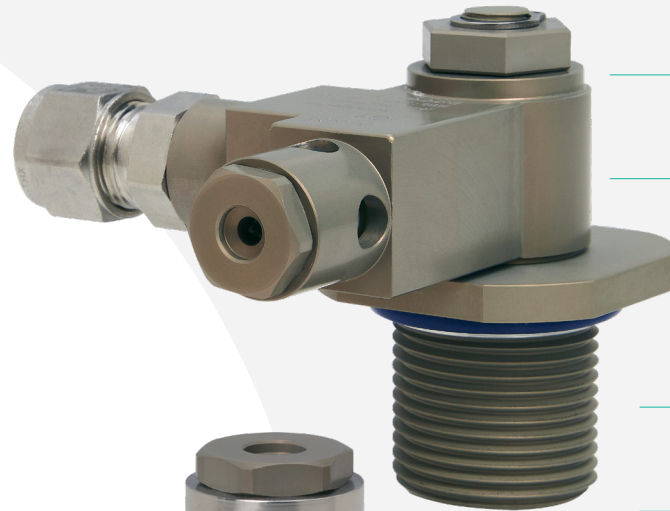
Long Range

**Designed for a short activation time** even without pressure difference

Inclusive **pipe away function**

**Trigger element:** Glass bulb

**Aperture diameter:** up to 4 mm



End Plug



Middle Plug

All seals designed for **compressed H2**

Reliable in **fueling** and **operation**

**Noiseless**

**Boss / tube connection:** tailored to customer specifications

**Compact, low-weight design**

**Activation temperature:** 110 °C ± 5 °C

**Operating pressure:** 0 - 70 MPa

**Operating temperature:** -40 °C - +85 °C

**Certifications:** EC 79, UN ECE R134, EU 535

**Burst pressure:** > 105 MPa

**Corrosion-resistant,** aluminium coated stainless steel

