



WORTHINGTON
ENTERPRISES

H2 GAS STREET COMPONENTS FOR BUSES

Need a tailor-made on-board fuel system for your hydrogen fuel cell bus, truck, or other heavy-duty vehicle? Worthington's PTEC components will get you on the road fast. Together with your engineers, we can design and assemble gas street components suited to your requirements.

Contact us today
to learn more.

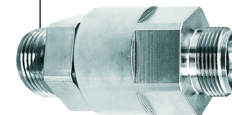
1. Fill Receptacle



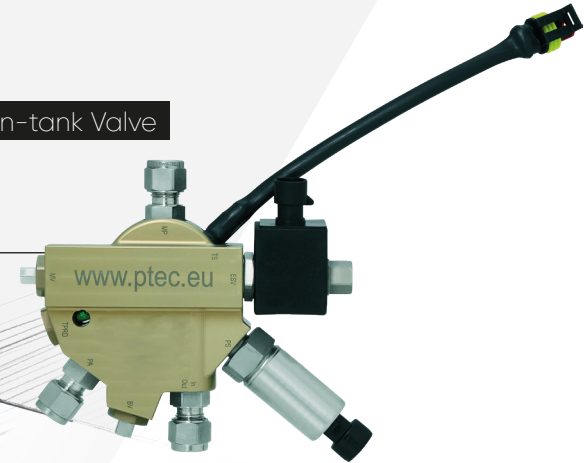
2. Inline Filter



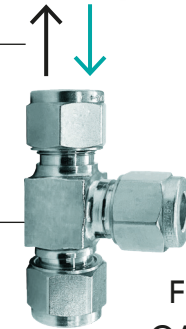
3. Check Valve



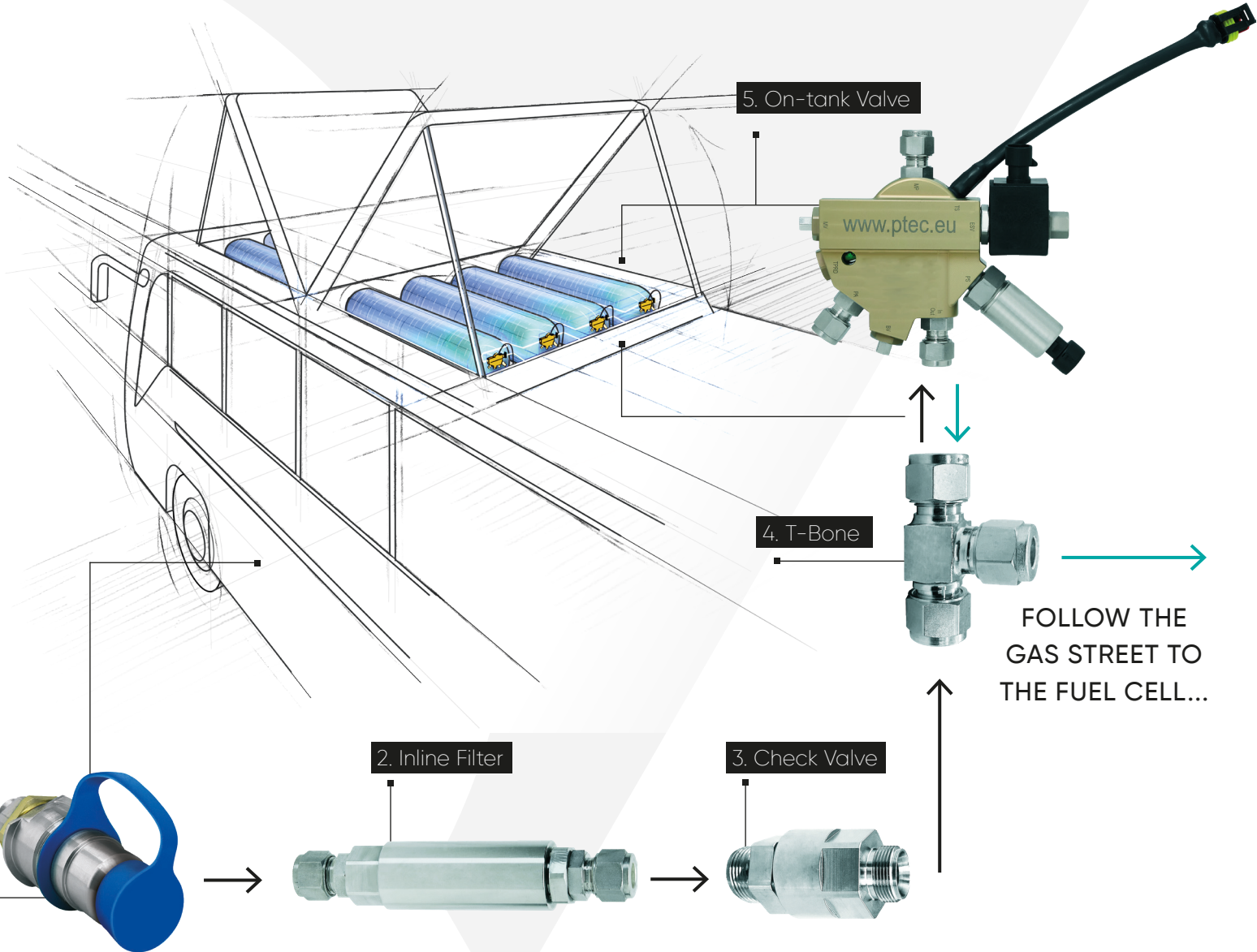
5. On-tank Valve



4. T-Bone



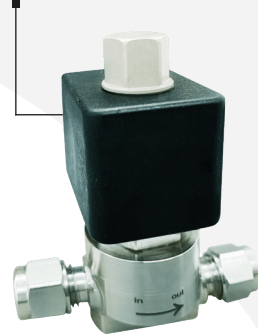
FOLLOW THE
GAS STREET TO
THE FUEL CELL...



10. Pressure Regulator



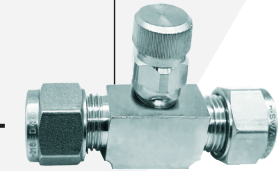
9. Inline Solenoid Valve



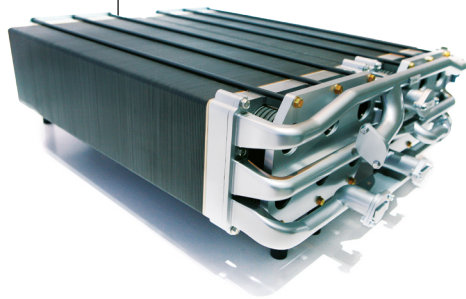
8. Coalescence Filter



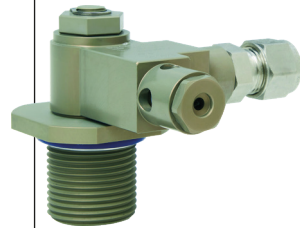
7. Purge Valve



Fuel Cell



6b. TPRD End Plug



6a. TPRD Middle Plug



WORTHINGTONS
LOOPER H2
ON-BOARD
FUELING SYSTEM

